

MONTHLY MEMBERSHIP PROGRESS REPORT

District 13 OH3

Results as of: 3/31/2020

GMT:

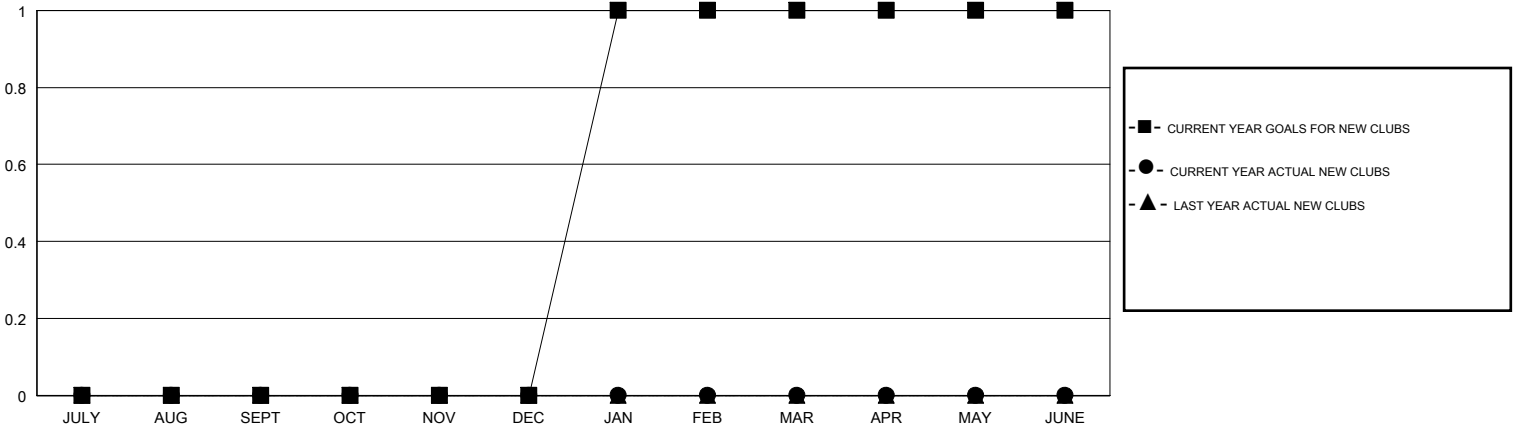
LOCATION OHIO

GMT CA

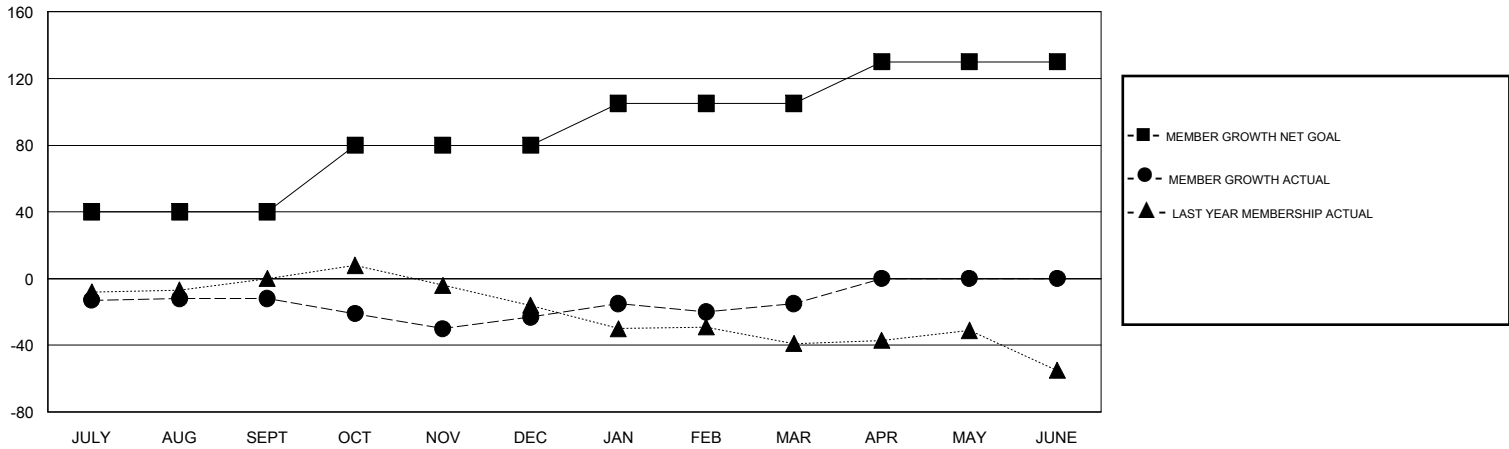
Clubs			
RESULTS FOR 2019-2020			
QUARTER	NEW CLUB GOAL	NEW CLUBS	DROPPED CLUBS
JULY/AUG/SEPT	0	0	0
OCT/NOV/DEC	0	0	1
JAN/FEB/MAR	1	0	0
APR/MAY/JUNE	0	0	0

Members			
RESULTS FOR 2019-2020			
QUARTER	MEMBER GROWTH NET GOAL	MEMBER GROWTH ACTUAL	DROPPED MEMBERS ACTUAL <small>(including transfers)</small>
JULY/AUG/SEPT	40	34	44
OCT/NOV/DEC	40	25	36
JAN/FEB/MAR	25	35	26
APR/MAY/JUNE	25	0	0

GOALS AND ACTUAL NEW CLUBS CUMULATIVE



GOALS AND ACTUAL MEMBERS CUMULATIVE



DROPPED CLUBS: 1	30 CLUBS OF 56 ADDED 1 OR MORE NEW MEMBERS	<u>GENDER DISTRIBUTION</u> MALE 1,002 (68.35%) FEMALE 464 (31.65%)
<u>DROPPED MEMBERS</u> DECEASED 20 CLUB CANCELLED 0 OTHER 86 <hr/> TOTAL 106	CLICK HERE FOR CUMULATIVE MEMBERSHIP DATA	TOTAL FAMILY UNIT MEMBERS 281 FAMILY MEMBERS PAYING HALF DUES 146